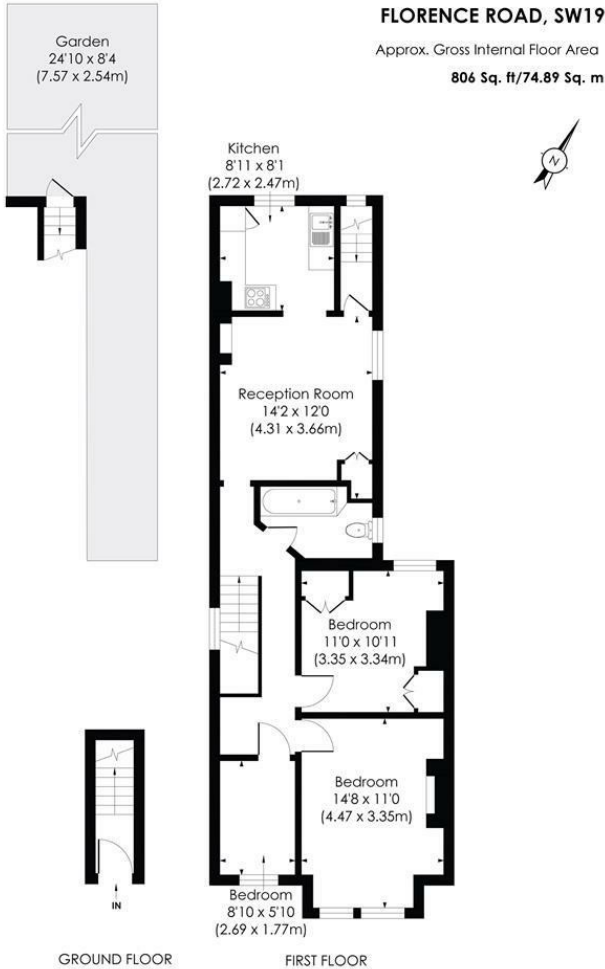


## Florence Road Wimbledon, SW19 8TH

**Offers In Excess Of £585,000 Leasehold - Share of Freehold**



**A rarely available, three bedroom, Victorian purpose-built end terraced maisonette with a private garden moments from South Park Gardens and Wimbledon Town Centre. There is flexible living accommodation with well proportioned rooms as well as a separate kitchen and internal stairs down to the garden additionally the property is sold with share of freehold. The maisonette is only a stone's throw away from the Broadway with its numerous amenities, shops and bars and is walking distance to both Wimbledon Mainline and Northern line stations. Properties of this style are sought after so an early viewing is recommended.**

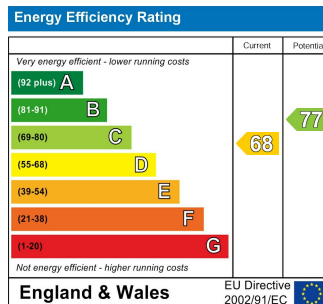


**pixangle**  
PROPERTY MARKETING

This floor plan has been prepared for the purpose of illustration only in accordance with the latest RICS code of measuring practice and is not to scale. All measurements and areas are approximate and whilst every effort has been made to ensure the accuracy of the plan contained here, no responsibility is taken for any error, omission or misstatement.

© Pixangle Property Marketing Ltd. info@pixangle.com Tel: 0208 870 2118

- Three Bedrooms
- Purpose-Built Victorian Maisonette
- End Terrace
- Private Garden
- Flexible Accommodation
- Moments from South Park Gardens
- Building Insurance Costs Split 50/50
- Share Of Freehold
- EPC Rating D



**For Free Mortgage Quote and Best Mortgage Rates, call an Ellisons Mortgage Advisor on 020 8944 9494**



Although these particulars are believed to be correct, their accuracy is not guaranteed and they do not form part of any contract.

**Celebrating 30 years of successful Sales and Lettings in Merton**

